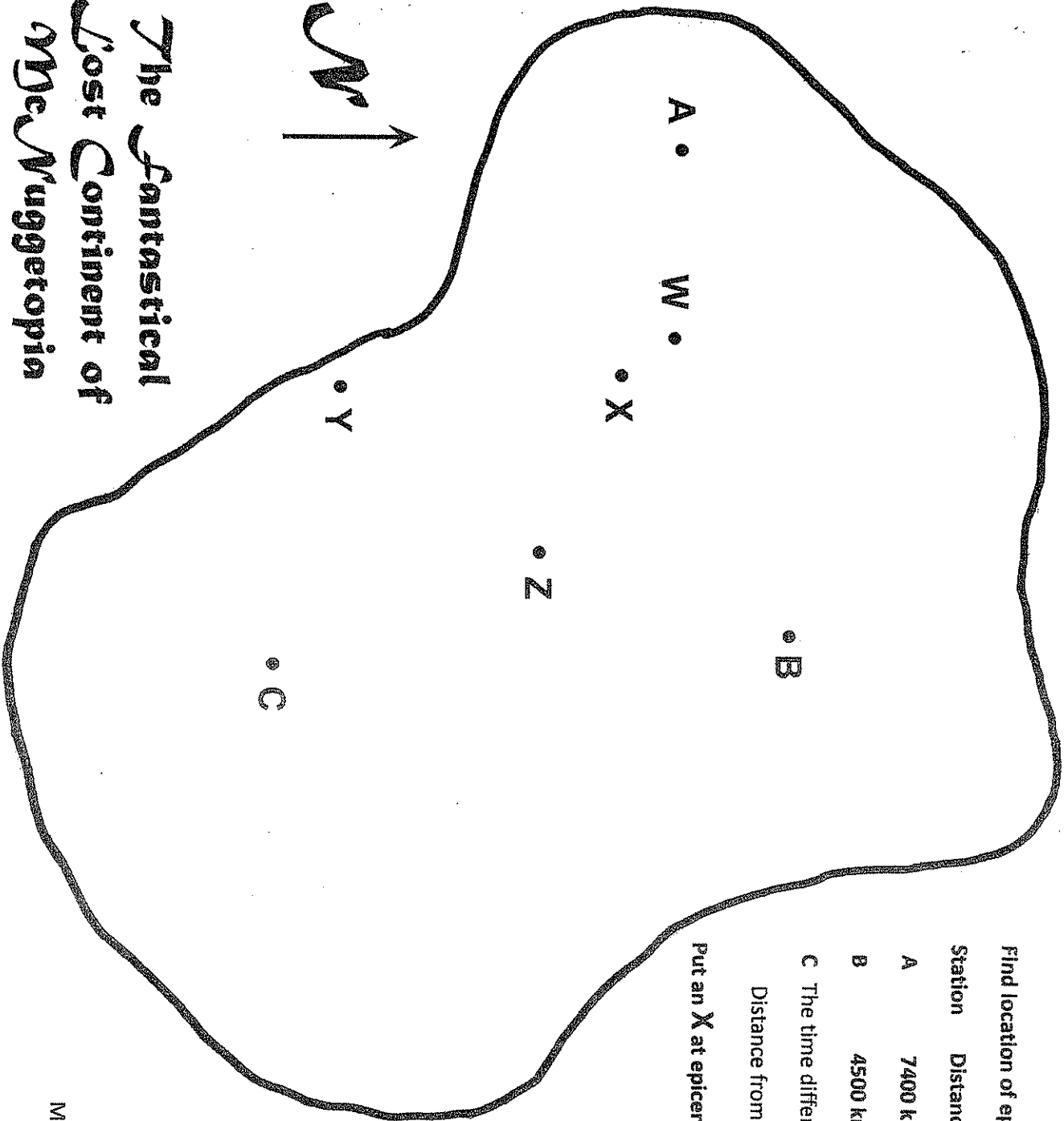


The Fantastical Lost Continent of McNuggetopia



Find location of epicenter using the following data:

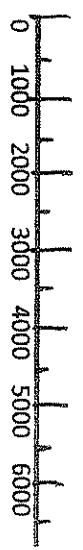
Station	Distance
A	7400 km.
B	4500 km

C The time difference between the P and S waves is 05:40

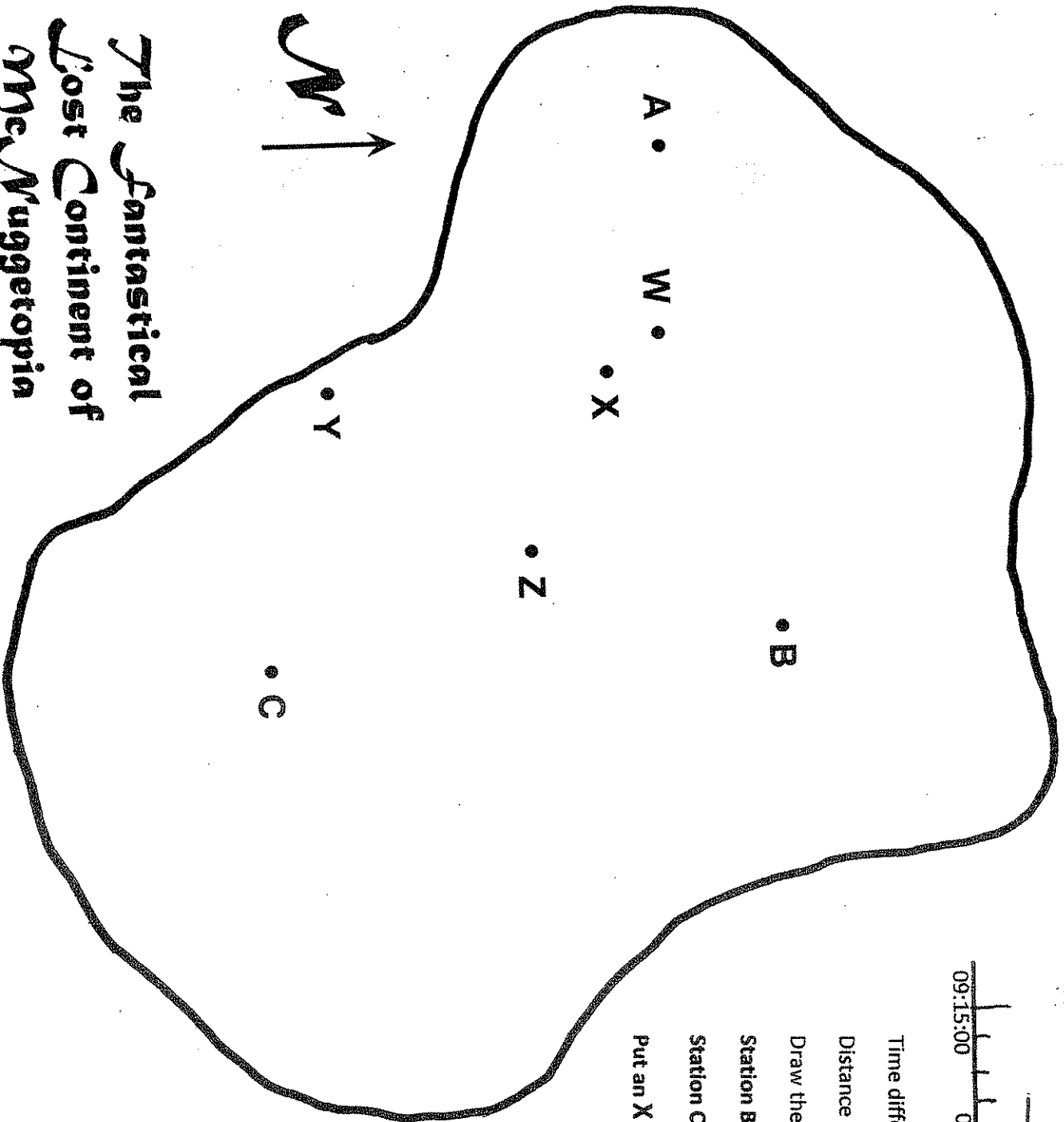
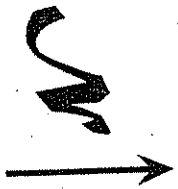
Distance from the epicenter from Station C _____

Put an X at epicenter

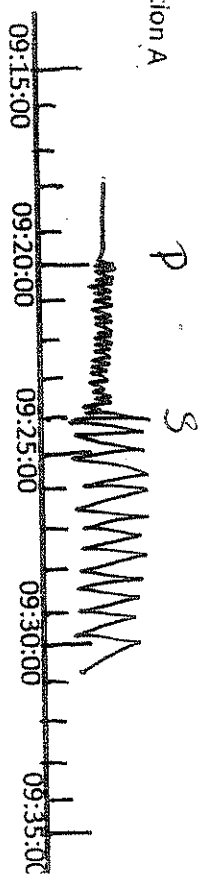
Map Scale in kilometers



The Fantastical Lost Continent of McMuggetopia



Station A



Time difference of P and S waves from above diagram _____

Distance from the epicenter from Station A _____

Draw the distance with compass

Station B distance to epicenter 5500 km.

Station C distance to epicenter 9000 km.

Put an X at epicenter

Map Scale in kilometers

